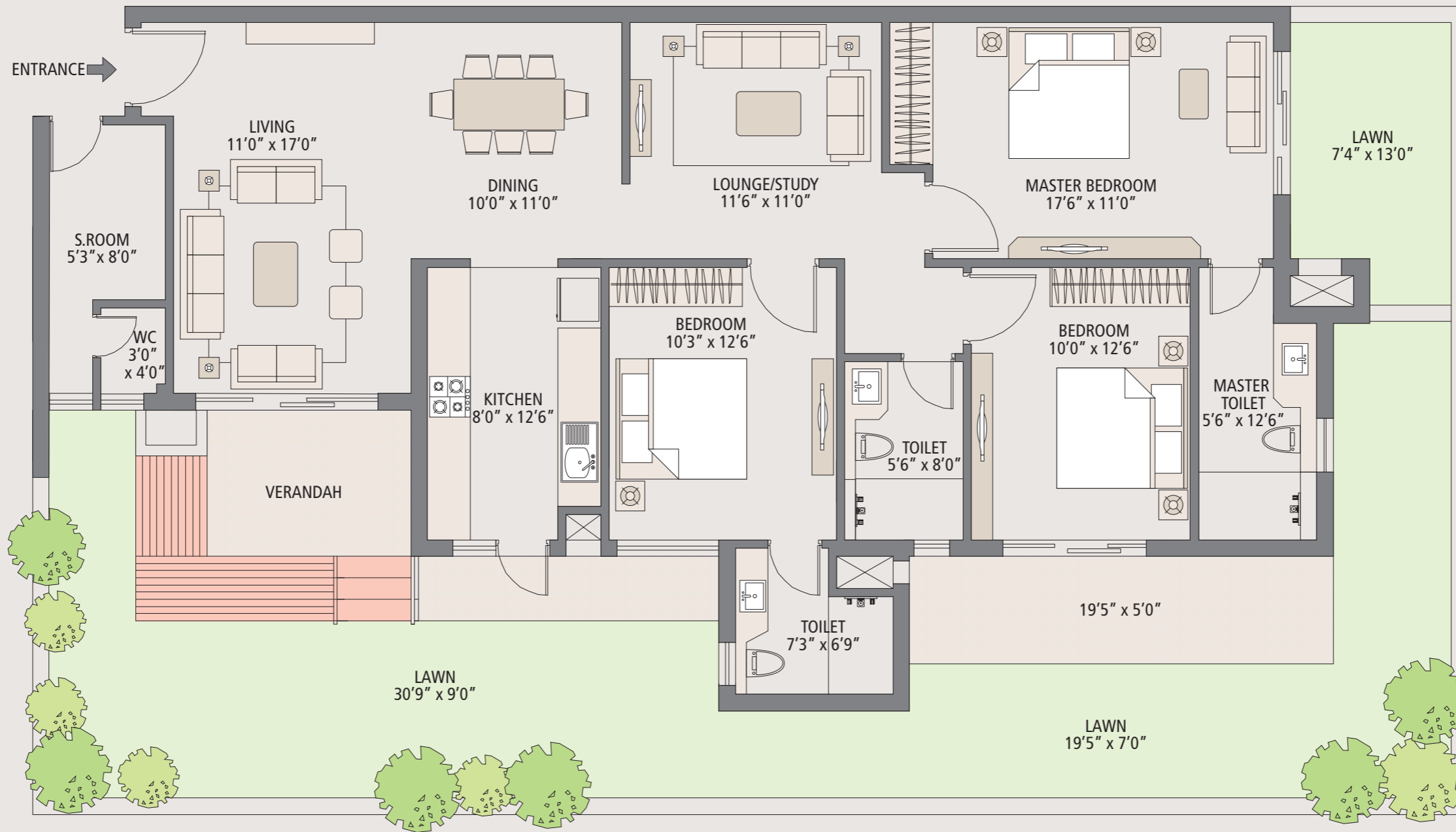


GROUND FLOOR 2025 sq.ft.

Living / Dining / 3 Bedrooms / 3 Toilets / S. Room / Lounge / Kitchen

// Floor Plan //



In designing the floor plans of our apartments, we made every effort to give you just a little bit more. Like we said, it's all in the details.

KEY FEATURES OF OUR FLOOR PLANS

All ground floor apartments come with a private lawn area.

Spacious and airy bedrooms, oriented according to Vaastu.

Living room spaces that open onto private verandahs.

Fully equipped modular kitchens with attached balconies.

Pre-installed split AC provisions in the living, dining and bedrooms.

Modular window systems

S. Room with ensuite bathroom outside the apartment.

Note: 1 sq. mtr. = 10.76 sq. ft. & 1 sq. mtr. = 1.196 sq.yds.

