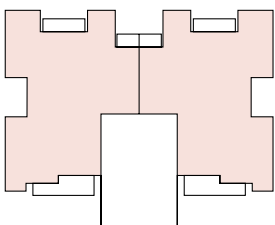
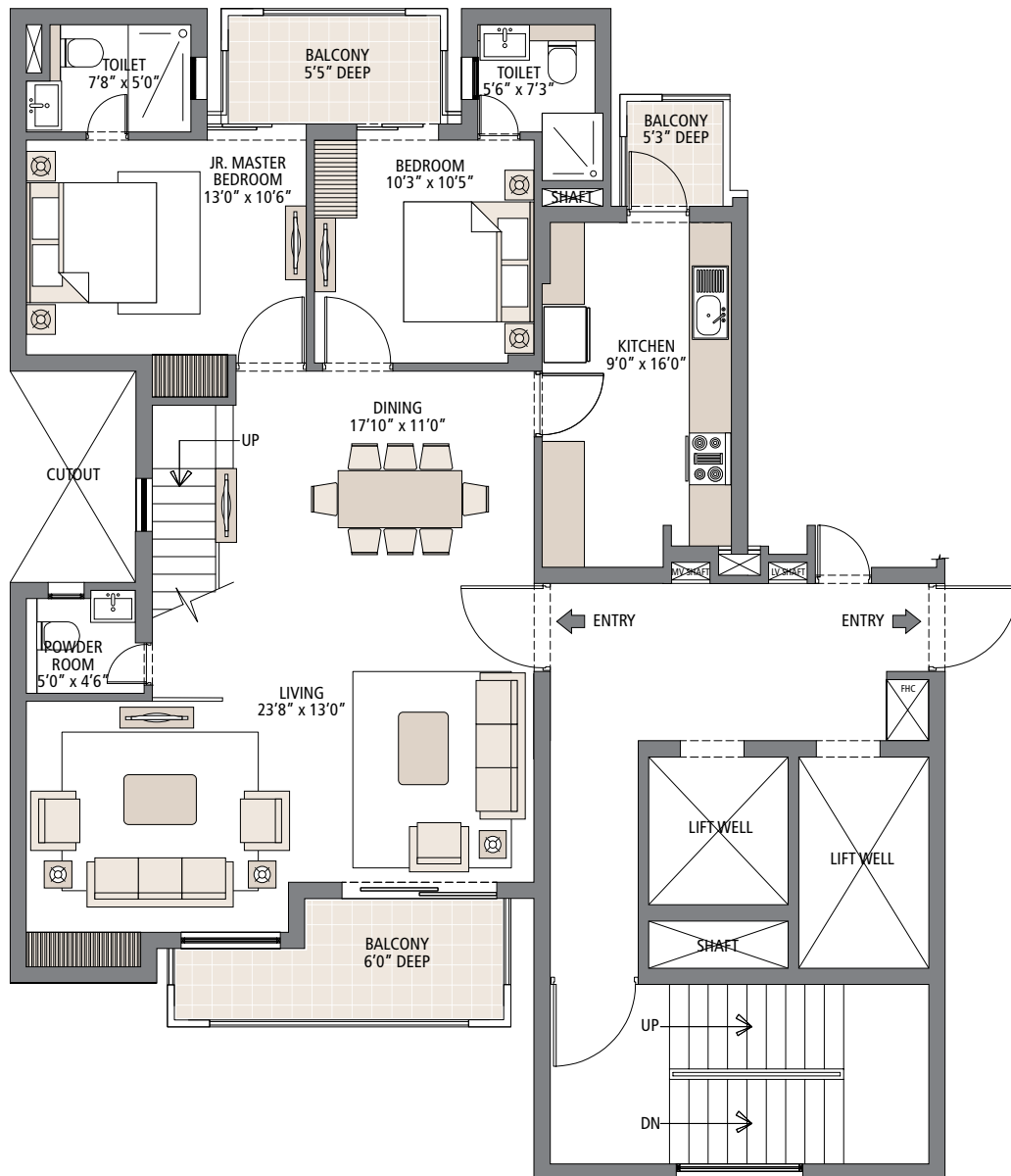


# Penthouse Floor Plan - Lower Level

Saleable Area: 3200 sq. ft.

4 Bedroom, 4 Bathroom, Living, Dining, S. Room and Family Lounge

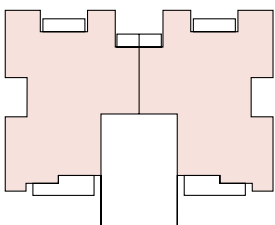
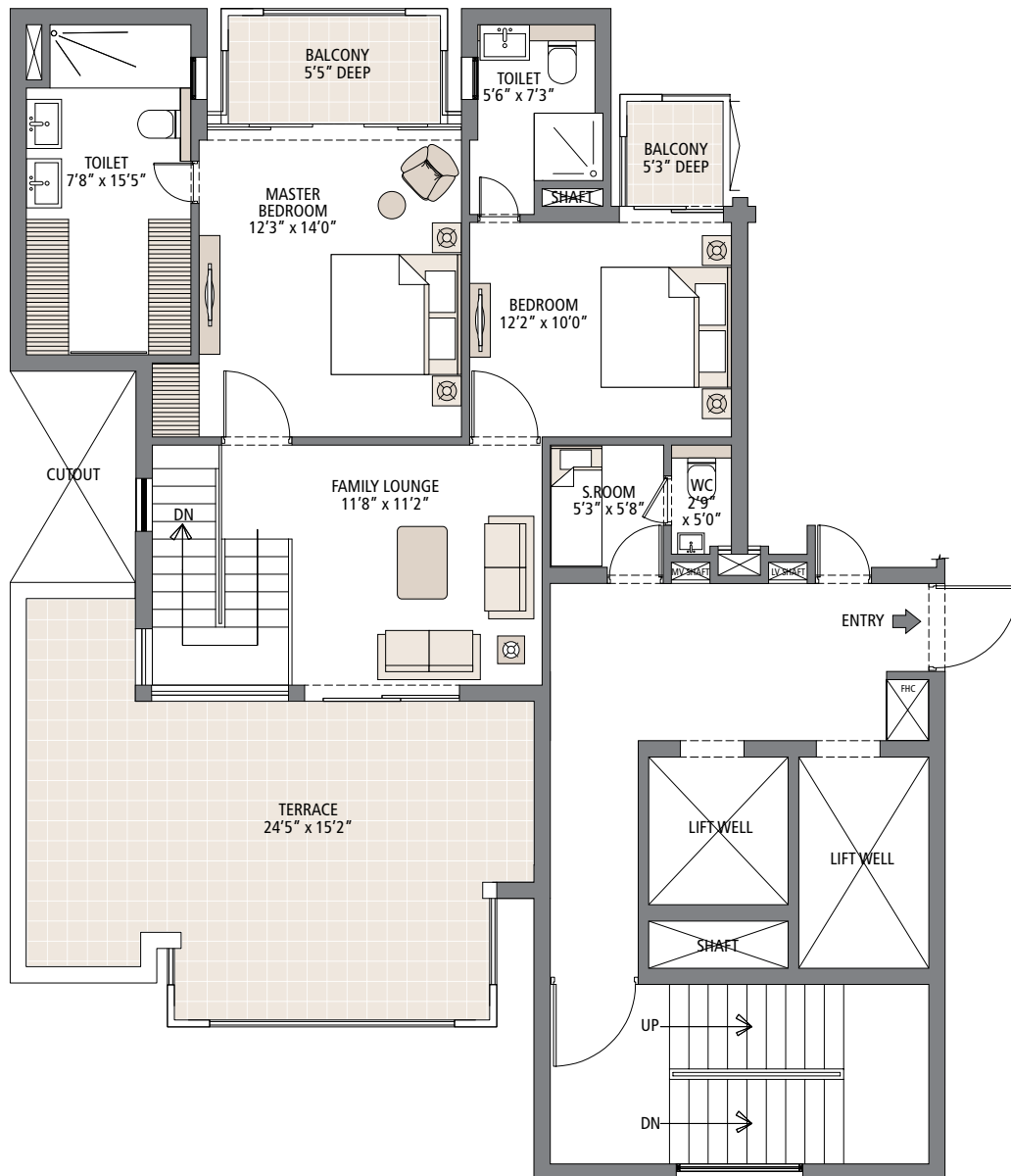


In the interest of maintaining high standards, all floor plans, layout plans, areas, dimensions and specifications mentioned are indicative and are subject to change as decided by the company or by any competent authority. Soft furnishing, cupboards, kitchen cabinets, furniture and gadgets are not part of the offering. 1 sq. mtr. = 1.196 sq. yds. & 1 sq. mtr. = 10.76 sq. ft.

# Penthouse Floor Plan - Upper Level

Saleable Area: 3200 sq. ft.

4 Bedroom, 4 Bathroom, Living, Dining, S. Room and Family Lounge



In the interest of maintaining high standards, all floor plans, layout plans, areas, dimensions and specifications mentioned are indicative and are subject to change as decided by the company or by any competent authority. Soft furnishing, cupboards, kitchen cabinets, furniture and gadgets are not part of the offering. 1 sq. mtr. = 1.196 sq. yds. & 1 sq. mtr. = 10.76 sq. ft.