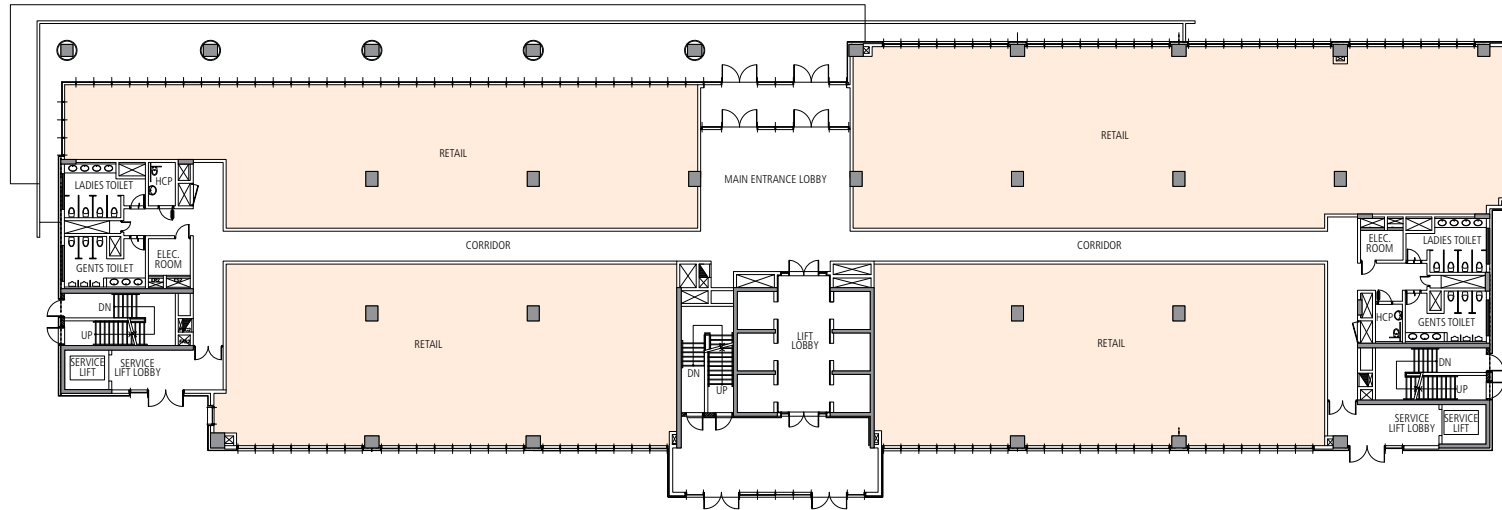
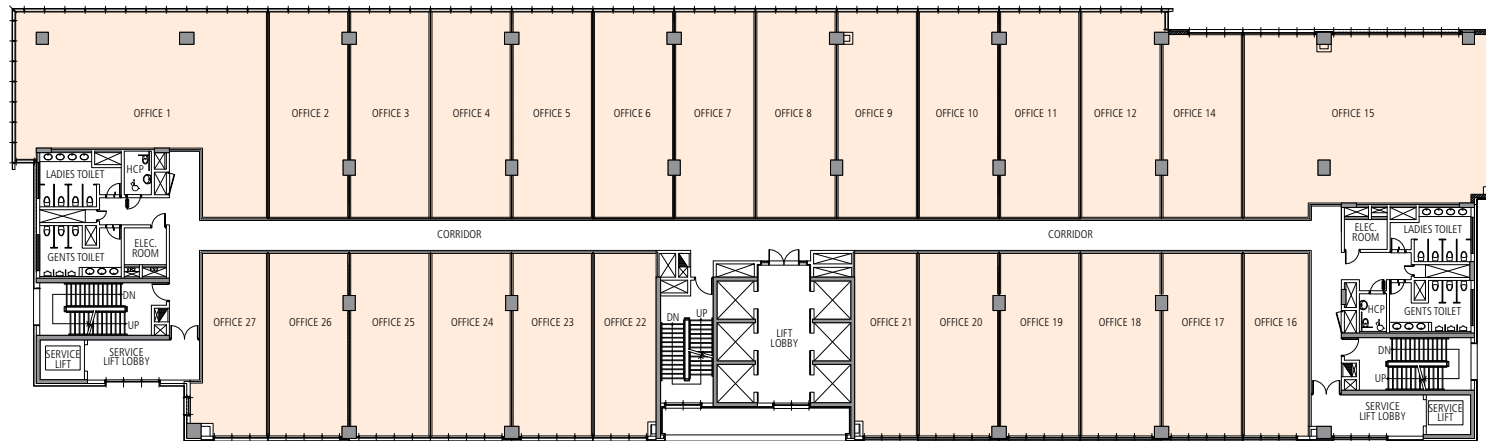


Tower A
Ground Floor Plan - 30,498 sq. ft.

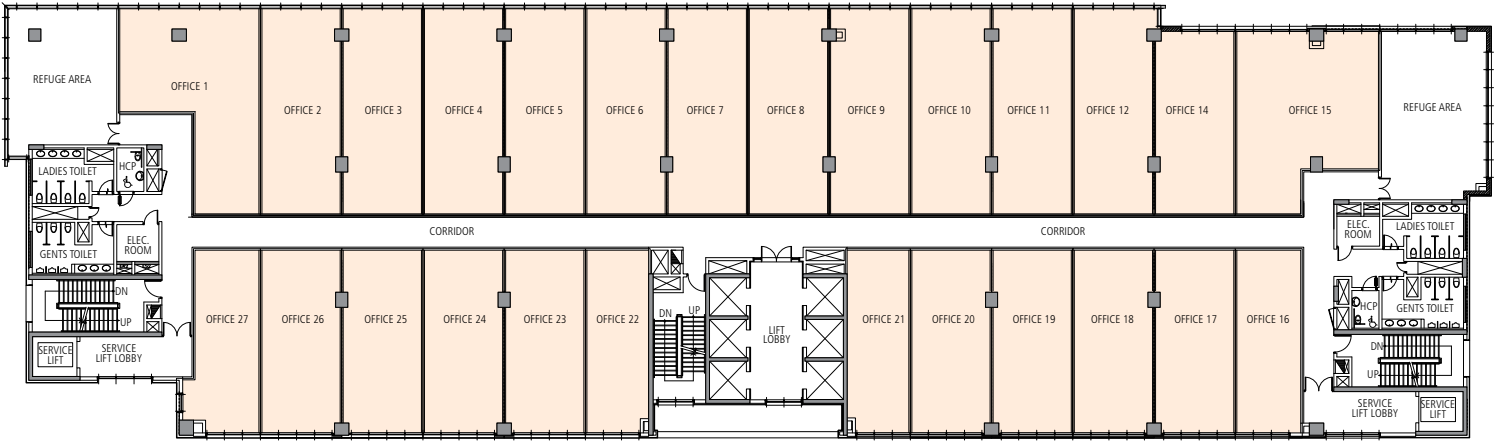


Tower A
Typical Floor Plan - 34,452 sq. ft.

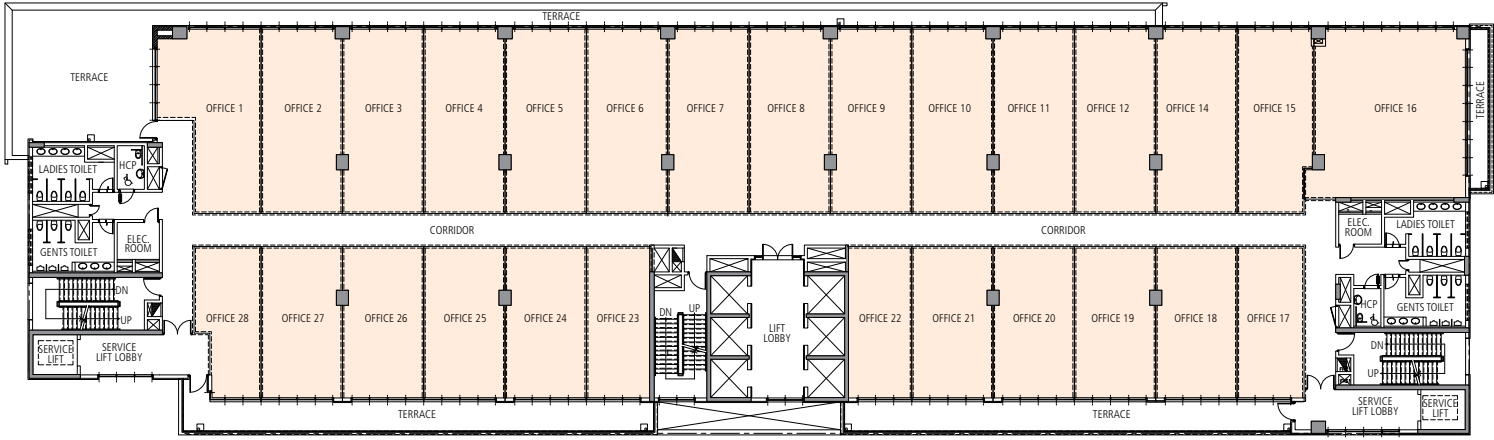


In the interest of maintaining high standards, all floor plans, layout plans, areas, dimensions and specifications are indicative and are subject to change as decided by the company or by any competent authority. Soft furnishing, cupboards, furniture and gadgets are not part of the offering. 1 sq. mtr. = 1.196 sq. yds. & 1 sq. mtr. = 10.76 sq. ft.

Tower A
6th Floor Plan - 31,436 sq. ft.



Tower A
9th & 10th Floor Plan - 28,299 sq. ft.



In the interest of maintaining high standards, all floor plans, layout plans, areas, dimensions and specifications are indicative and are subject to change as decided by the company or by any competent authority. Soft furnishing, cupboards, furniture and gadgets are not part of the offering. 1 sq. mtr. = 1.196 sq. yds. & 1 sq. mtr. = 10.76 sq. ft.

