

GODREJ MERIDIEN

SECTOR 106, GURUGRAM

UNIT PLANS



PRODUCT DETAILS – PREMIUM TOWERS

TYPOLOGY	CARPET AREA (SQ.M.)	EXCLUSIVE AREA (SQ.M.)	TOTAL AREA (SQ.M.)	PRE-LAUNCH PRICE* (CR)
2 BHK TYPE B	75.93	17.37	93.30	1.06 - 1.08
3 BHK TYPE B	95.23	16.44	111.67	1.26 - 1.30
3 BHK TYPE A / C	102.97 / 104.10	24.12 / 22.25	127.09 / 126.35	1.44 - 1.53

*EDC/IDC AND GOVERNMENT CHARGES EXTRA

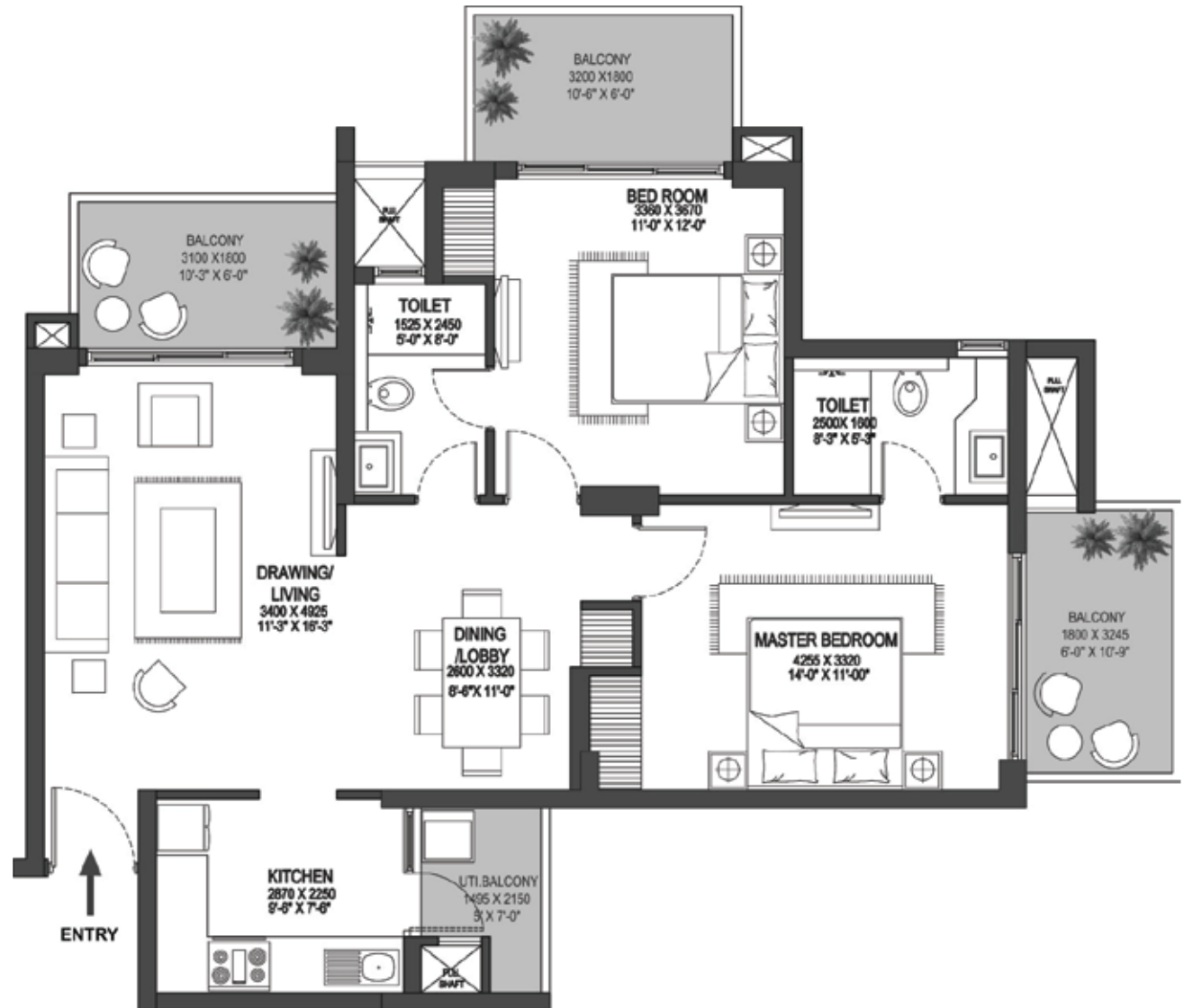
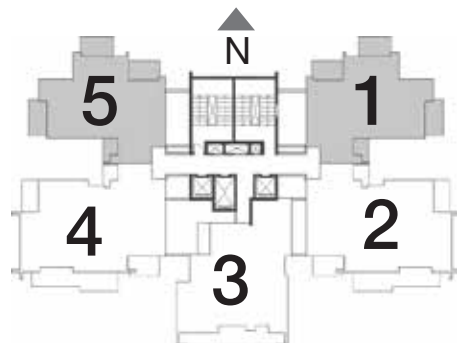
PAYMENT DETAIL

Account Title	Godrej Meridien
Account No.	50200030236327
Bank	HDFC Bank Ltd
Branch	Splendor Trade Tower, Golf Course, Extension Rd, Sector 65, Gurugram, Haryana 122101
IFSC Code	HDFC0003676
SWIFT Code	HDFCINBB

GODREJ MERIDIEN

SECTOR 106, GURUGRAM

2 BHK - TYPE B
1ST TO 19TH FLOOR

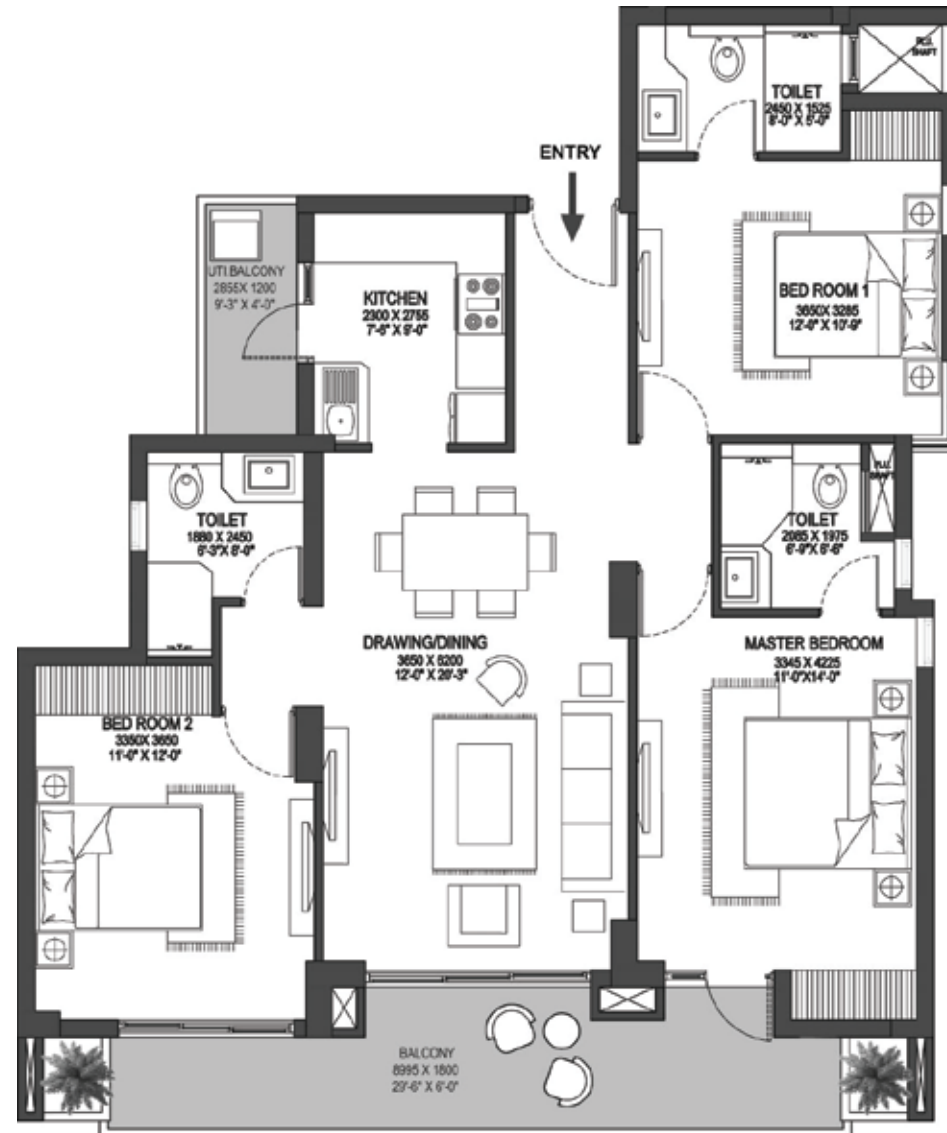
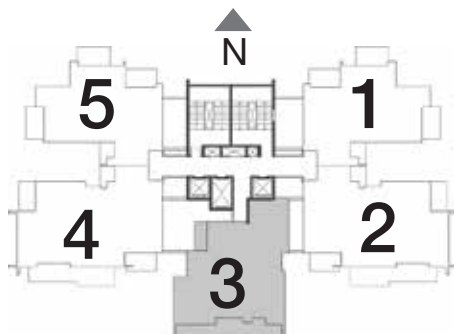


Disclaimer: Furniture, accessories, fixtures shown in the plans are for representational purposes only.

GODREJ MERIDIEN

SECTOR 106, GURUGRAM

TYPE B - 3 BHK
1ST TO 19TH FLOOR

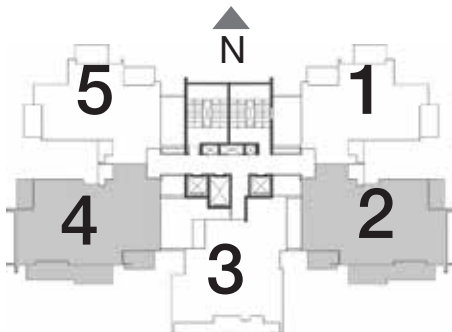
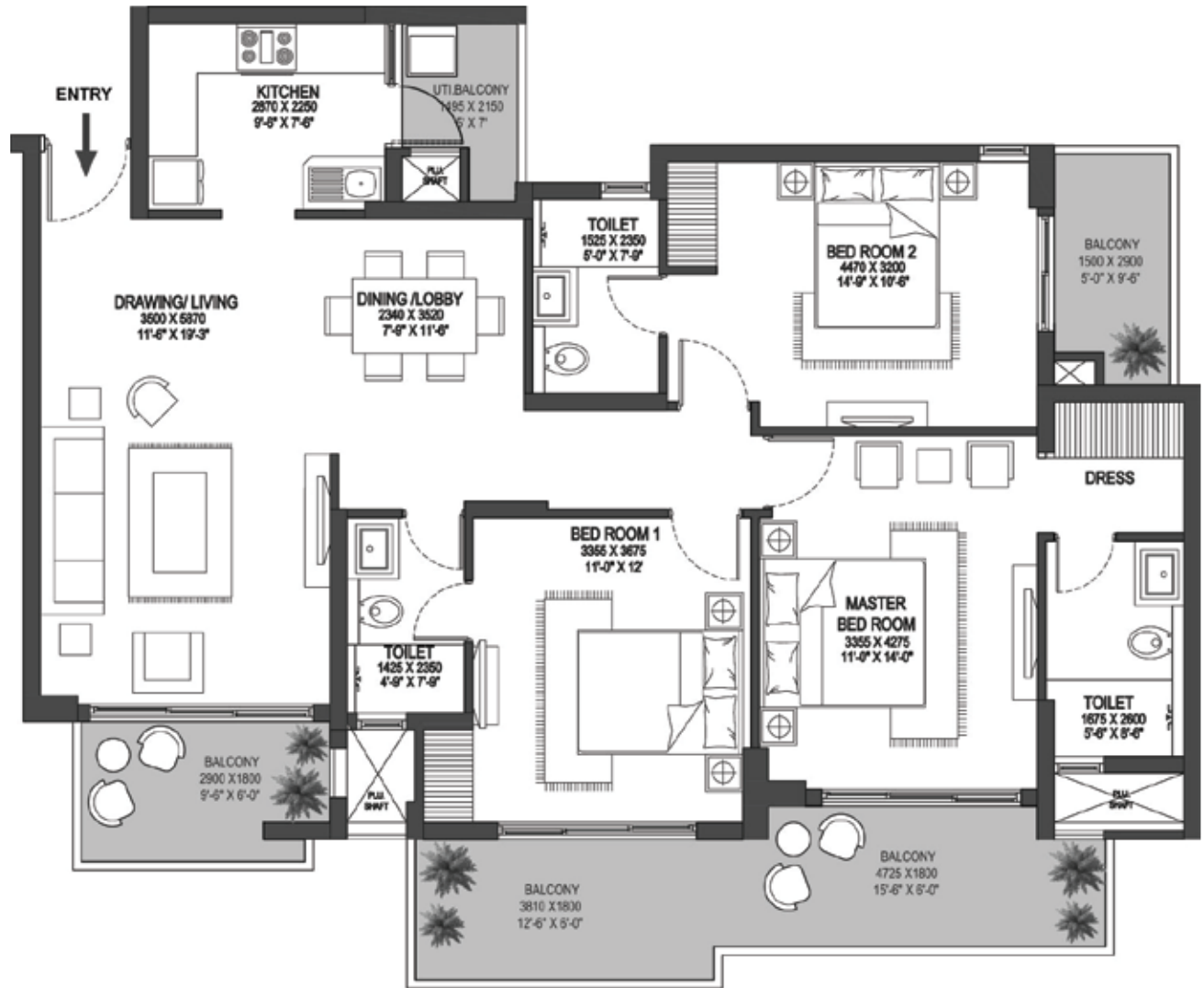


Disclaimer: Furniture, accessories, fixtures shown in the plans are for representational purposes only.

GODREJ MERIDIEN

SECTOR 106, GURUGRAM

TYPE A - 3 BHK
1ST TO 19TH FLOOR

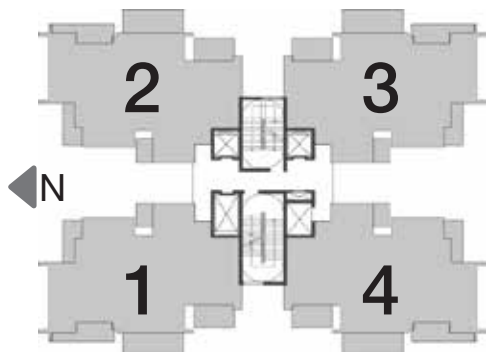
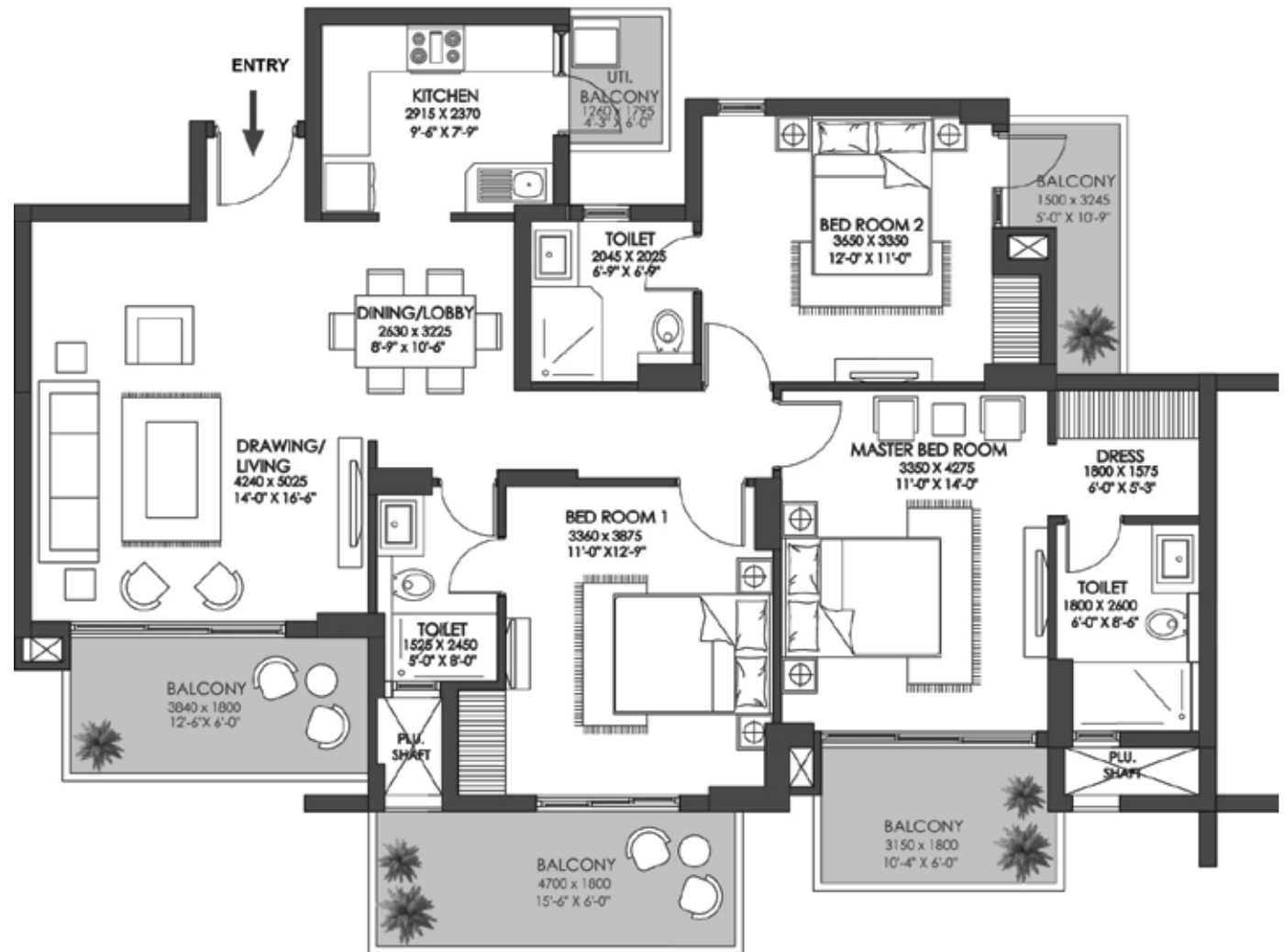


Disclaimer: Furniture, accessories, fixtures shown in the plans are for representational purposes only.

GODREJ MERIDIEN

SECTOR 106, GURUGRAM

TYPE C - 3 BHK
1ST TO 20TH FLOOR



Disclaimer: Furniture, accessories, fixtures shown in the plans are for representational purposes only.

PRODUCT DETAILS – ICONIC TOWERS

TYPOLOGY	CARPET AREA (SQ.M.)	EXCLUSIVE AREA (SQ.M.)	TOTAL AREA (SQ.M.)	PRE-LAUNCH PRICE* (CR)
3 BHK + UTILITY	113.97	24.00	137.97	1.63 - 1.66
4 BHK + UTILITY	153.95	34.34	188.30	2.22 - 2.35

*EDC/IDC AND GOVERNMENT CHARGES EXTRA

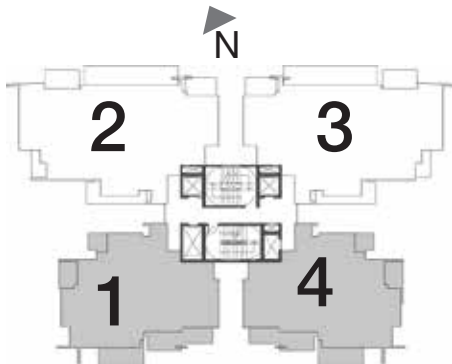
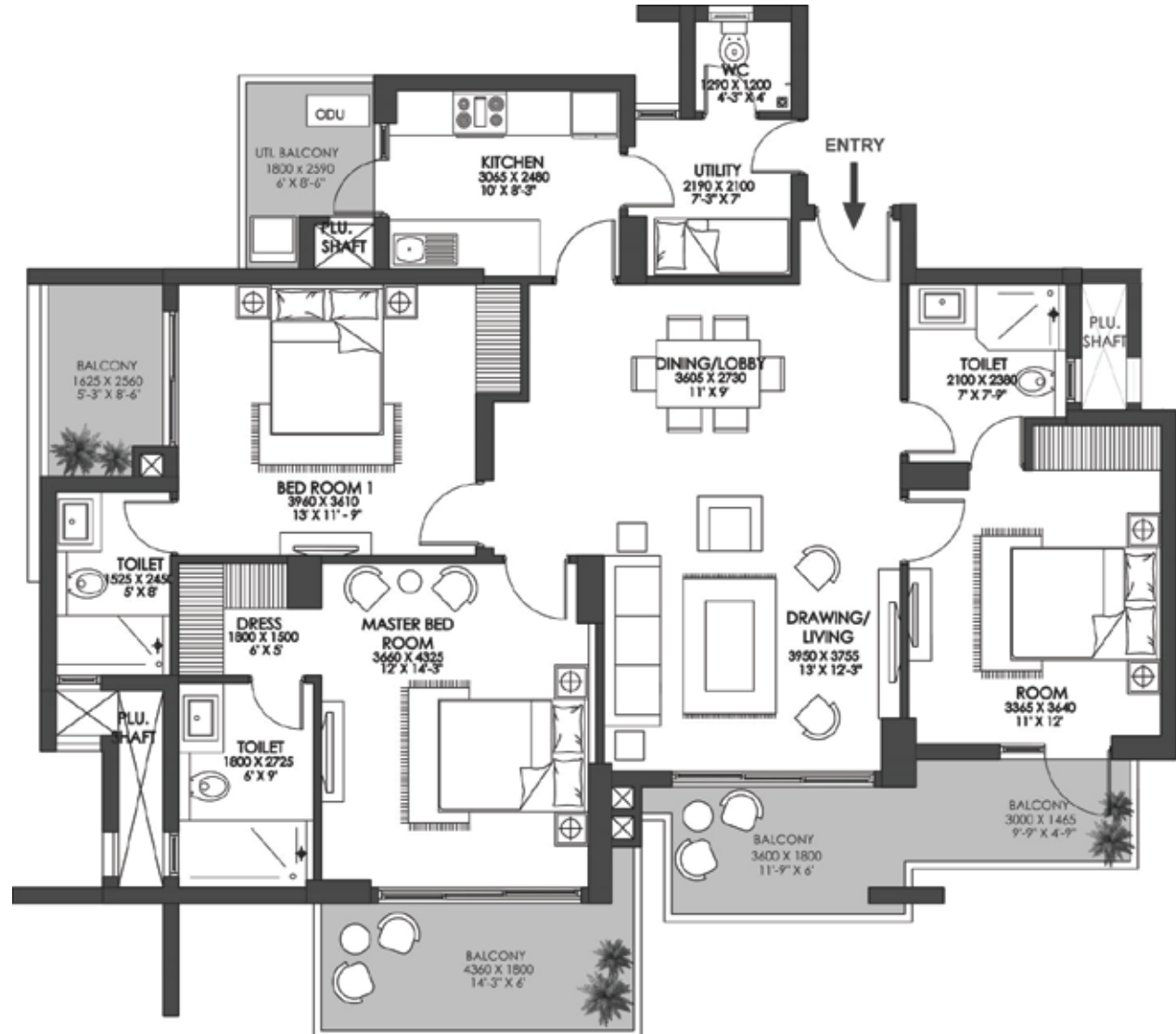
PAYMENT DETAIL

Account Title	Godrej Meridien Iconic
Account No.	50200030236455
Bank	HDFC Bank Ltd
Branch	Splendor Trade Tower, Golf Course, Extension Rd, Sector 65, Gurugram, Haryana 122101
IFSC Code	HDFC0003676
SWIFT Code	HDFCINBB

GODREJ MERIDIEN

SECTOR 106, GURUGRAM

3RHK+ UTILITY
1ST TO 19TH FLOOR

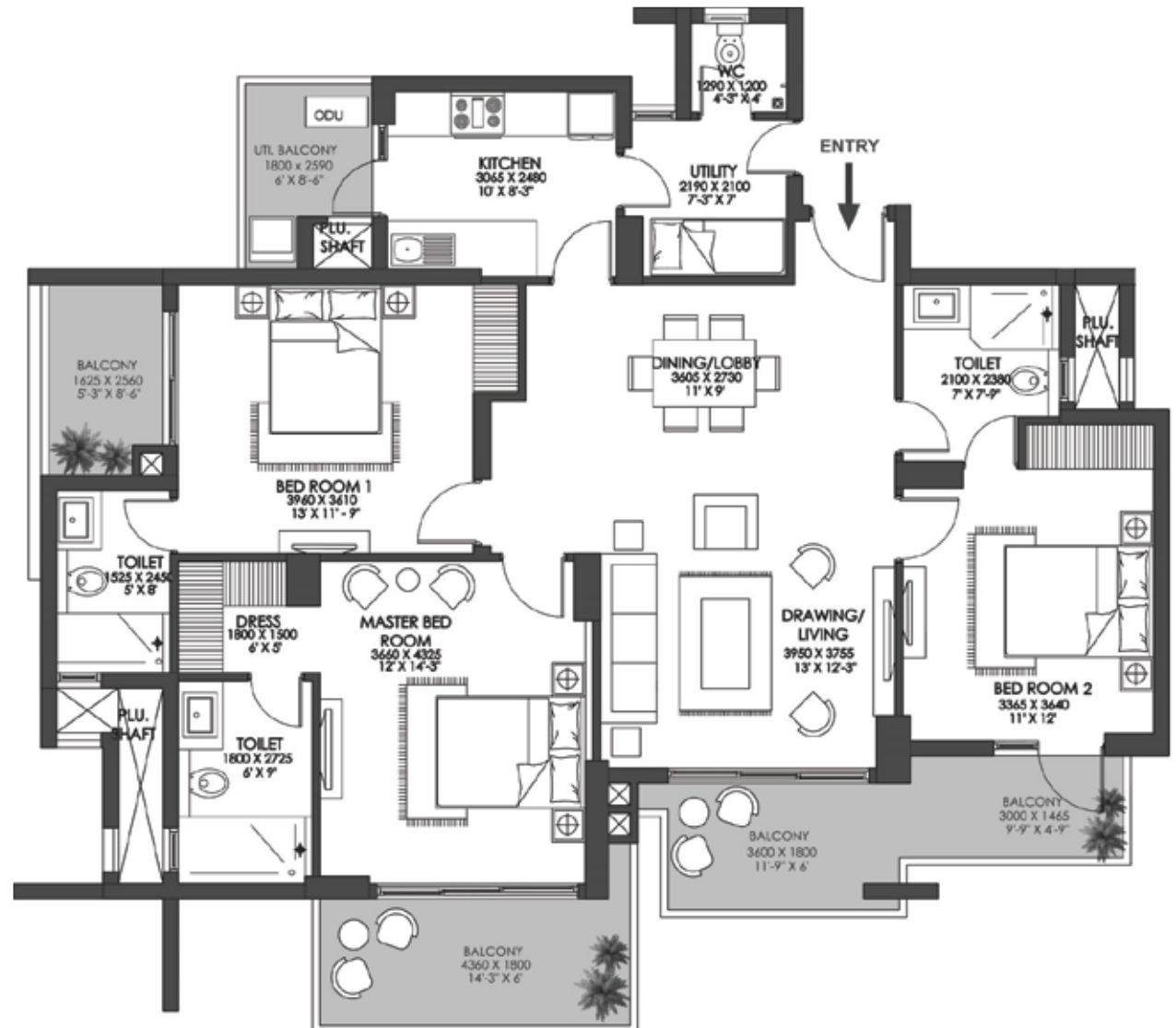
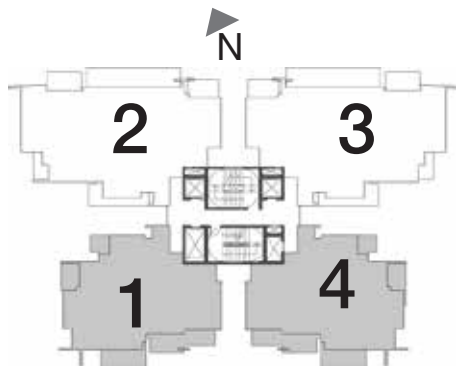


Disclaimer: Furniture, accessories, fixtures shown in the plans are for representational purposes only.

GODREJ MERIDIEN

SECTOR 106, GURUGRAM

TYPE A - 3 BHK+ UTILITY
21ST TO 29TH, 31ST AND 32ND FLOOR

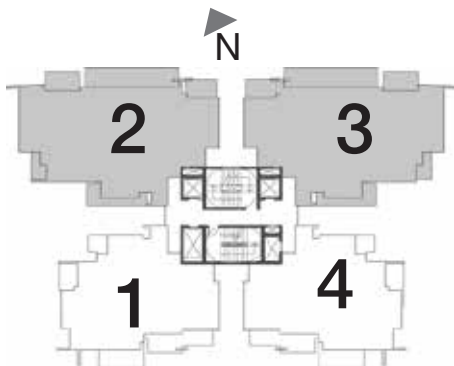
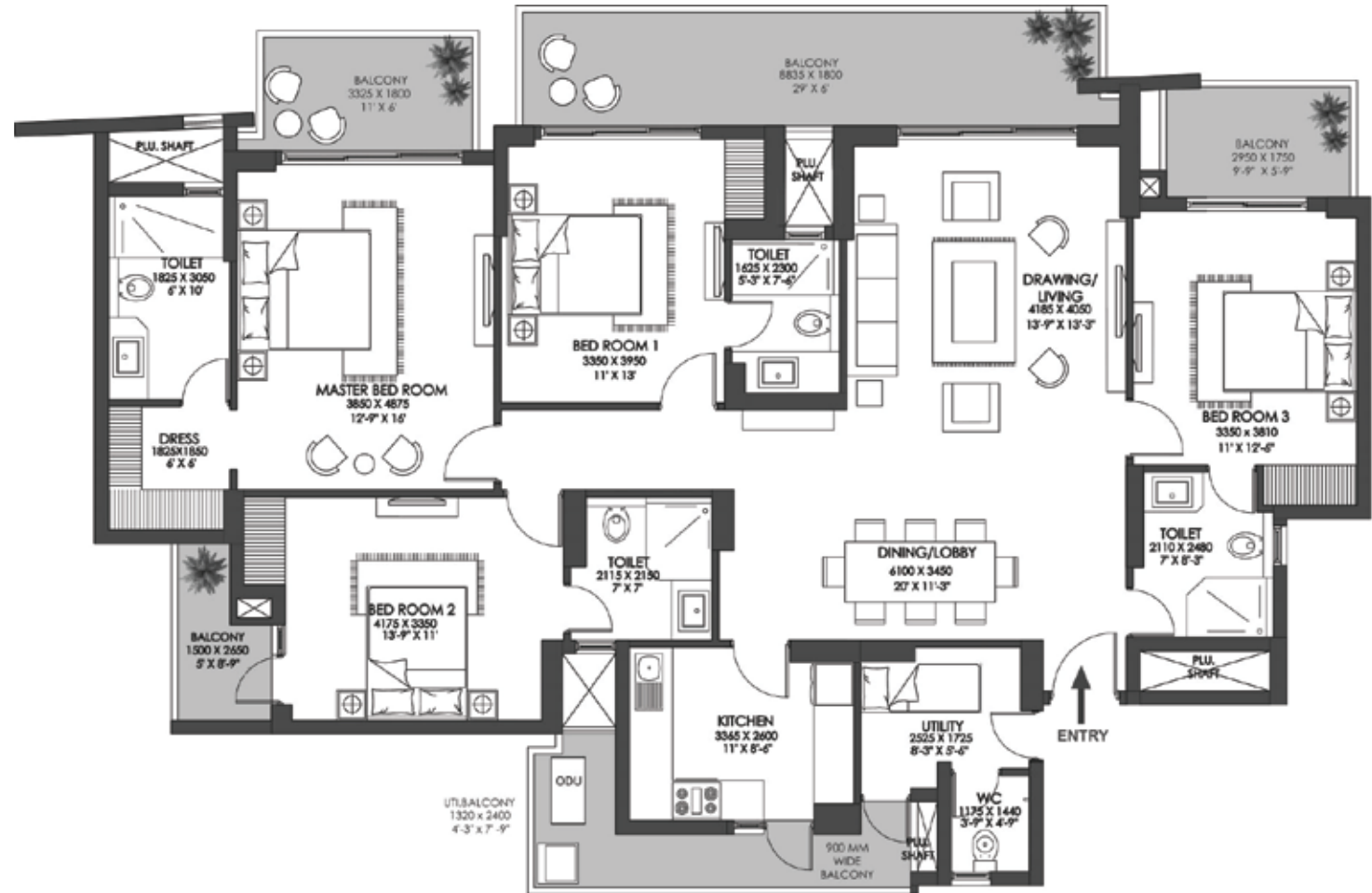


Disclaimer: Furniture, accessories, fixtures shown in the plans are for representational purposes only.

GODREJ MERIDIEN

SECTOR 106, GURUGRAM

4BHK
1ST TO 32ND FLOOR



Disclaimer: Furniture, accessories, fixtures shown in the plans are for representational purposes only.

#MEMBERSONLY

RERA registration No. RC/REP/HARERA/GGM/2018/05 & No. RC/REP/HARERA/GGM/2018/06 | License No. 18 of 2008 Building Plan Approval – Memo No. ZP-1128/AD(RA)/2018/9858 | <http://www.harera.in/>

This contains artistic impressions and no warranty is expressly or impliedly given that the completed development will comply in any degree with such artist's impression as depicted. The furniture, accessories, items, goods, additional fittings/ fixtures, decorative items including finishing materials, specifications, shades, sizes and colour of the tiles, etc. shown in the image are only indicative in nature and are only for the purpose of illustrating/indicating a conceived layout and do not form part of the standard specifications/amenities/services to be provided. The company shall not assume any responsibility of information provided by third parties and reliance shall be placed only on the information provided on the Company's official web site i.e. <https://www.godrejproperties.com/gurugram/residential/godrej-meridien/landingpage>
#MEMBERSONLY - For prospective customers of this development.