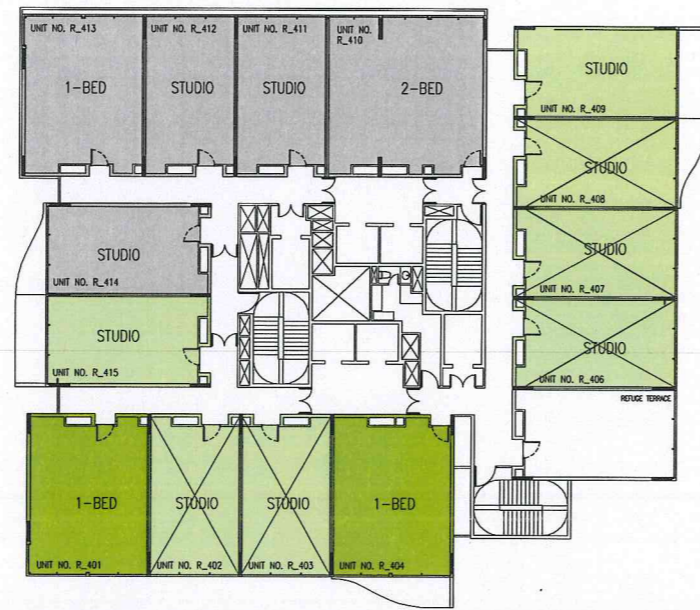


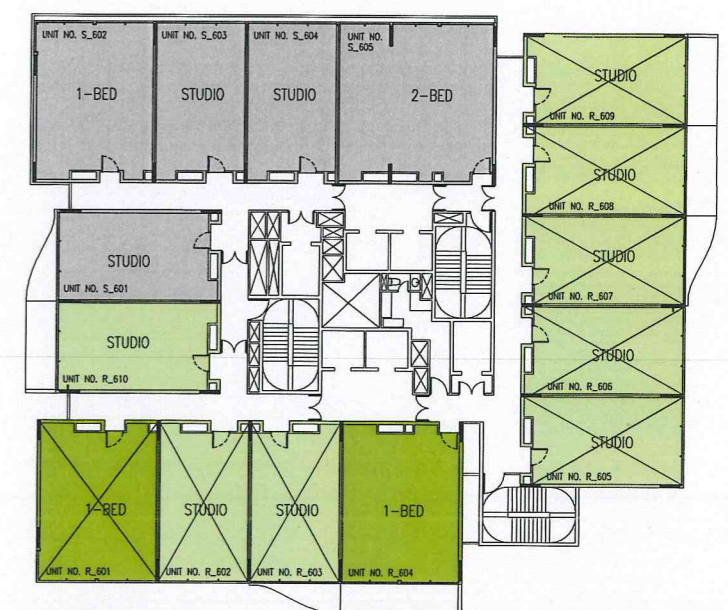
3RD FLOOR



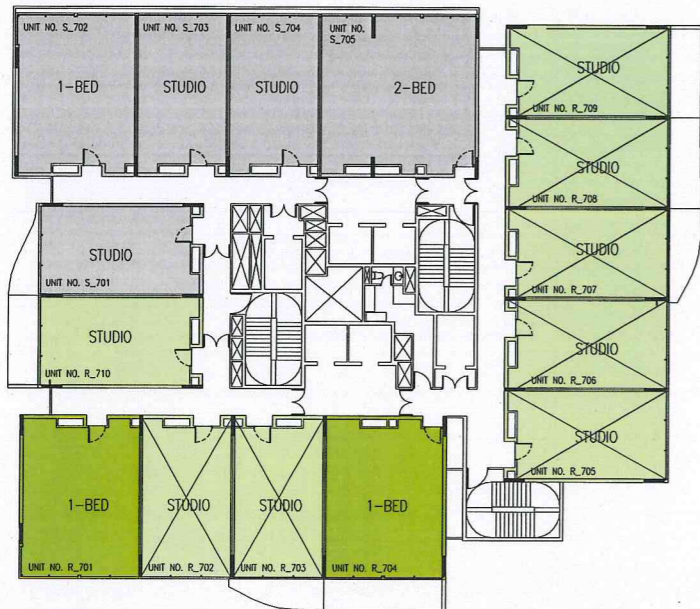
4TH FLOOR  
(R405 TO BE SHIFTED TO R407)



5TH FLOOR



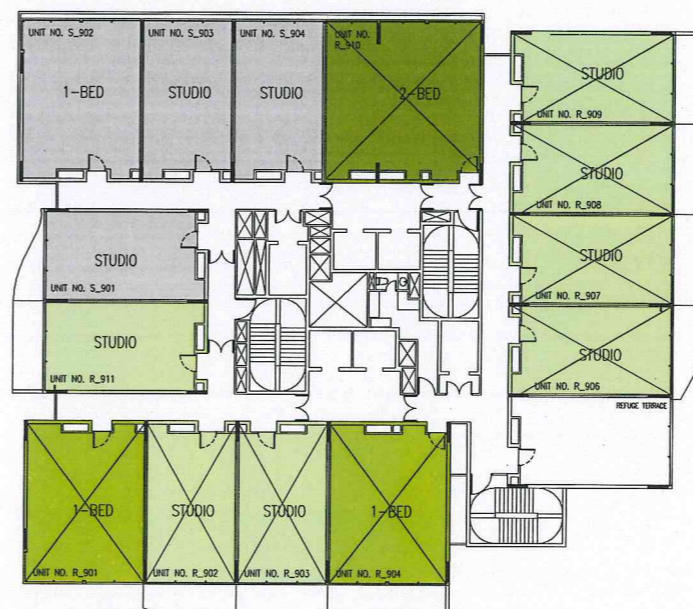
6TH FLOOR



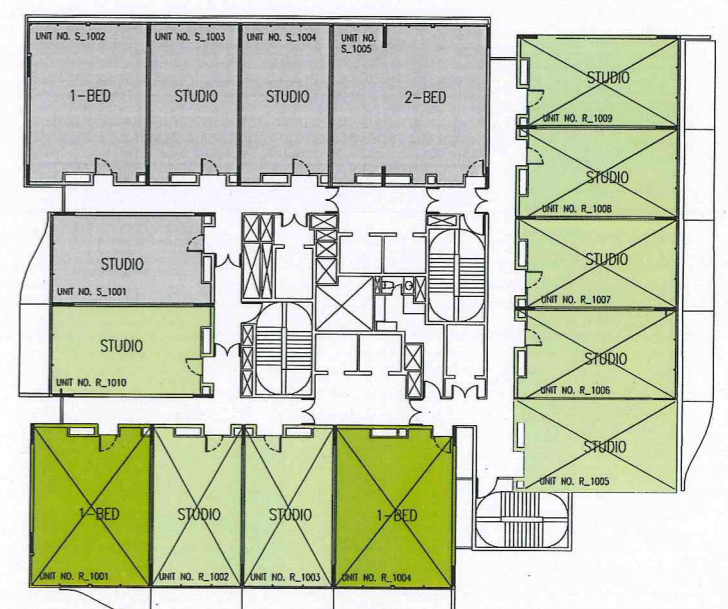
7TH FLOOR  
(R905 TO BE SHIFTED TO R705)



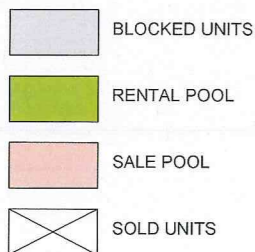
8TH FLOOR



9TH FLOOR  
(R905 TO BE SHIFTED TO R705)



10TH FLOOR



EFFECT DUE TO RELOCATION OF UNITS:

1. DUE TO INTRODUCTION OF REFUGE TERRACE R405 IS SHIFTED TO R407 AND R905 SHIFTED TO R705. CRM TO CONFIRM SUITABILITY BY 12TH MARCH.
2. S703, S903, AND S1103 SHIFTED TO S1302, S1402 AND S1602 RESPECTIVELY AS THE UNIT LOCATION AT THOSE FLOORS UNDER CONSIDERATION ARE AT PRESENT BLOCKED FROM SALE. CRM TO CONFIRM SUITABILITY BY 12TH MARCH.
3. THREE 2BHK UNITS ARE SOLD FOR RENTAL POOL (R910, R1110 AND R1410). SALES TO ADVISE ON COMMUNICATION OF PLC ATTRIBUTES TO THE BUYERS.



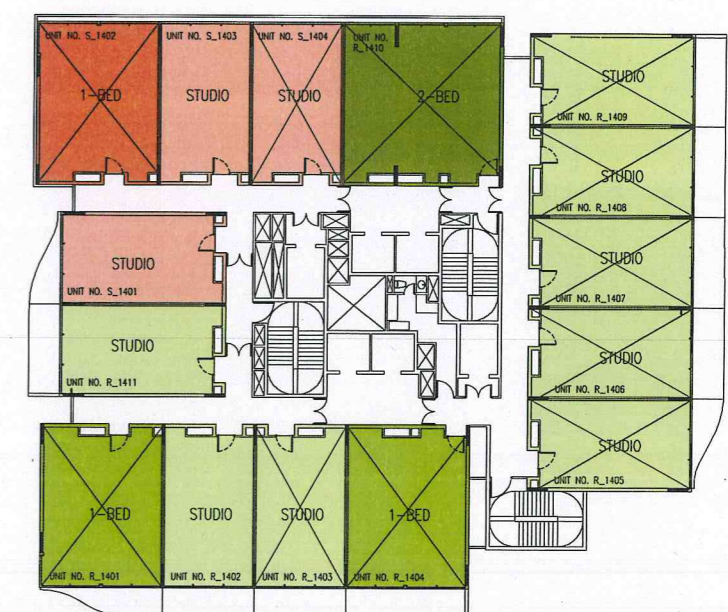
11TH FLOOR



12TH FLOOR  
(NUMBERING CHANGED FROM S1201 TO R1210 AND S1202 TO R1211)



13TH FLOOR  
(S703 SHIFTED TO S1302)



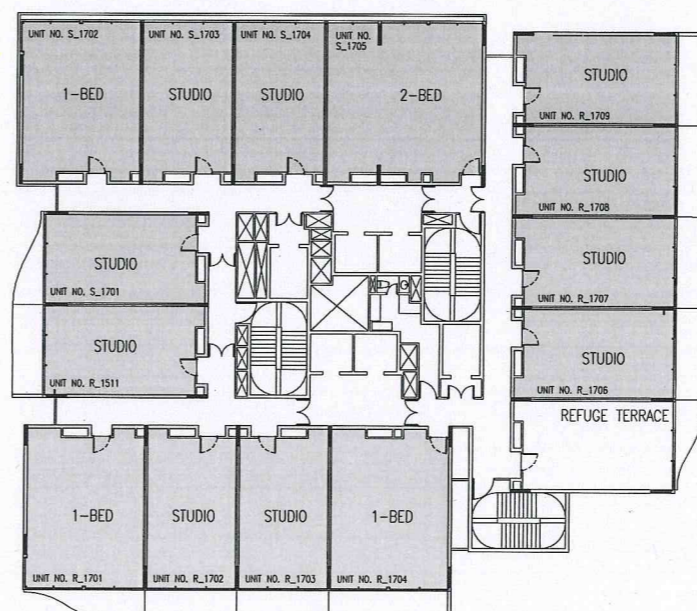
14TH FLOOR  
(S903 SHIFTED TO S1402; NUMBERING CHANGED FROM S1405 TO S1404)



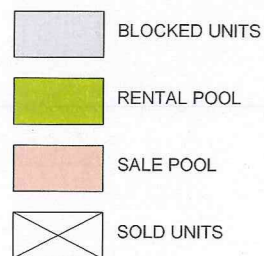
15TH FLOOR  
(NUMBERING CHANGED FROM S1513 TO S1502, S1505 TO R1504 AND R1510 TO S1505)



16TH FLOOR  
(S1103 SHIFTED TO S1602; NUMBERING CHANGED FROM S1605 TO S1604)



17TH FLOOR



EFFECT DUE TO RELOCATION OF UNITS:

1. DUE TO INTRODUCTION OF REFUGE TERRACE R405 IS SHIFTED TO R407 AND R905 SHIFTED TO R705. CRM TO CONFIRM SUITABILITY BY 12TH MARCH.
2. S703, S903, AND S1103 SHIFTED TO S1302, S1402 AND S1602 RESPECTIVELY AS THE UNIT LOCATION AT THOSE FLOORS UNDER CONSIDERATION ARE AT PRESENT BLOCKED FROM SALE. CRM TO CONFIRM SUITABILITY BY 12TH MARCH.
3. THREE 2BHK UNITS ARE SOLD FOR RENTAL POOL (R910, R1110 AND R1410). SALES TO ADVISE ON COMMUNICATION OF PLC ATTRIBUTES TO THE BUYERS.